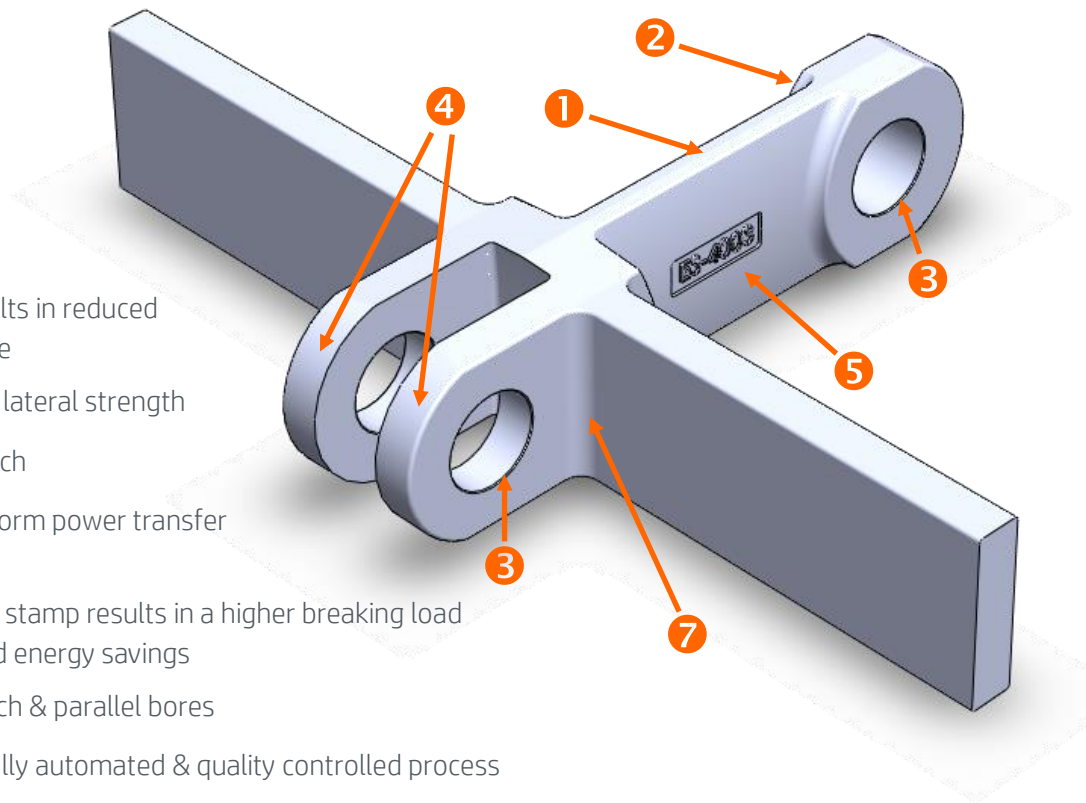
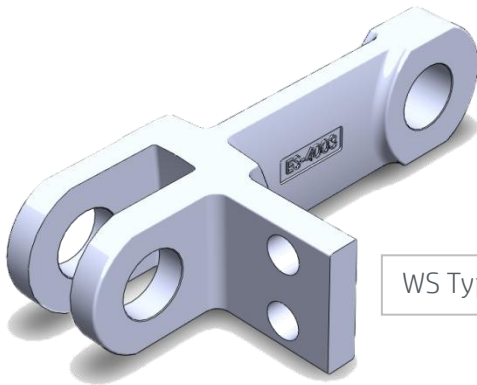


Forked Chain

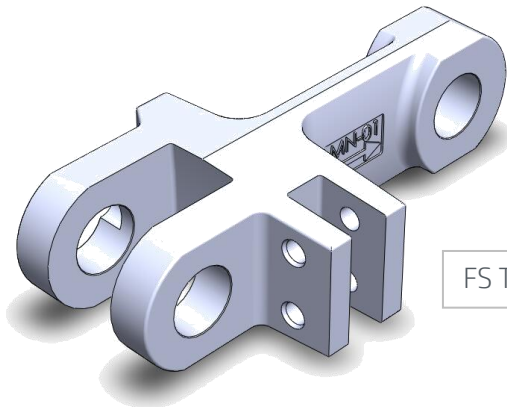
Entecom Forked Chain Link design



- 1 larger contact surface results in reduced wear and extended life time
- 2 bigger tail radius improves lateral strength
- 3 deburred bores at exact pitch
- 4 parallel milled fork for uniform power transfer to the sprocket wheel
- 5 rounded body & minimized stamp results in a higher breaking load with even lower weight and energy savings
- 6 cnc machining for exact pitch & parallel bores
- 7 welding guaranteed by a fully automated & quality controlled process
- 8 constantly improved design based on field experience in conveyor systems
- 9 forged in cnc molds, sandblasted and deburred
- 10 improved heat treatment for extended life time and maximized strength



WS Type



FS Type

Research Park Haasrode 1529
Interleuvenlaan 21 • B-3001 Leuven (Belgium)
T +32 (0)16 400 463 • F +32 (0)16 400 252
info@entecom.be • www.entecom.be