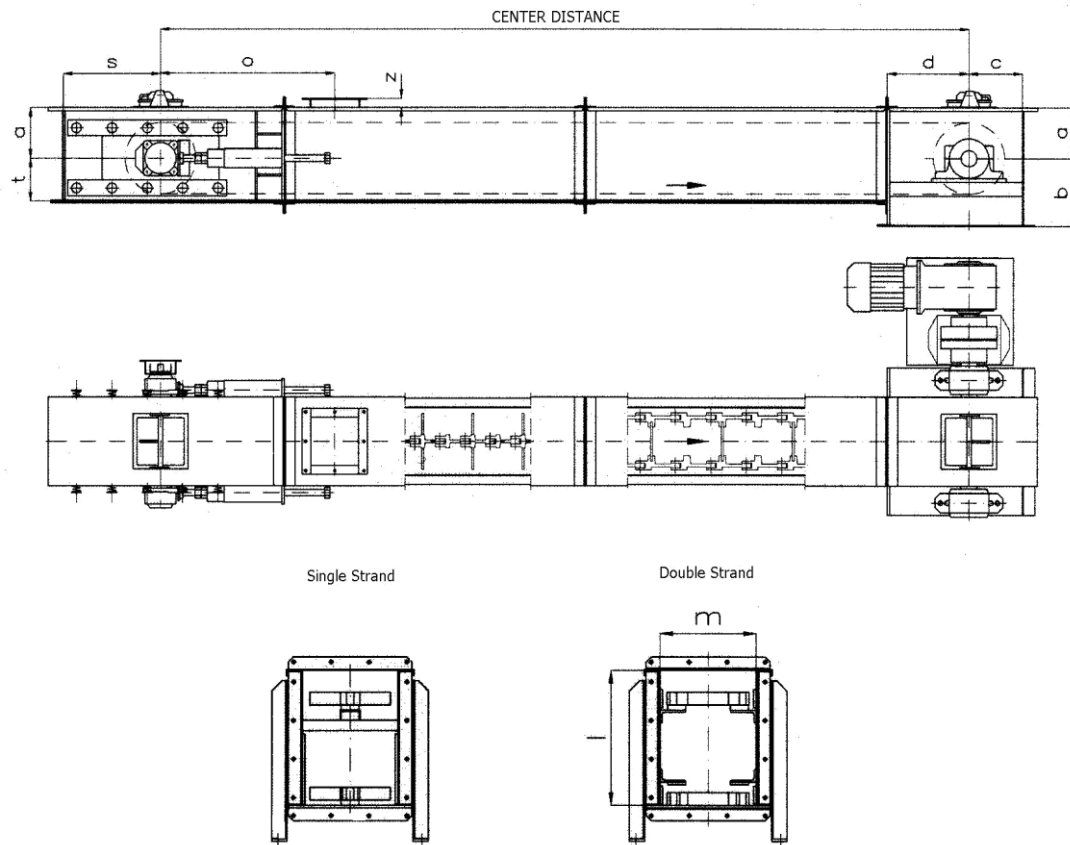


Scraper Conveyors



| Chain Width [mm] | 200 | 250 | 315 | 315 | 400 | 500 | 630 | 800 | 1000 | 1250 |
|------------------------|------------------------------|------|------|---------------|------|------|------|------|------|------|
| | Single Strand | | | Double Strand | | | | | | |
| Speed | 0,25 | 0,25 | 0,25 | 0,25 | 0,25 | 0,25 | 0,25 | 0,25 | 0,25 | 0,25 |
| | Capacity [m ³ /h] | | | | | | | | | |
| With hold down rail | - | - | - | 21 | 45 | 83 | 128 | 244 | 316 | 406 |
| Without hold down rail | 23 | 36 | 45 | 56 | 92 | 126 | 158 | 288 | 360 | 450 |

| Chain Width Drive Station | b | 200 | 250 | 315 | 315 | 400 | 500 | 630 | 800 | 1000 | 1250 |
|---------------------------|---|-----|-----|-----|-----|------|------|------|------|------|------|
| | a | 210 | 210 | 210 | 298 | 298 | 298 | 298 | 405 | 405 | 405 |
| | b | 340 | 340 | 340 | 450 | 450 | 450 | 450 | 610 | 610 | 610 |
| | c | 230 | 230 | 230 | 300 | 300 | 300 | 300 | 400 | 400 | 400 |
| Trough | d | 370 | 370 | 370 | 450 | 450 | 450 | 450 | 600 | 600 | 600 |
| | l | 405 | 405 | 405 | 528 | 528 | 528 | 528 | 730 | 730 | 730 |
| | m | 260 | 310 | 375 | 375 | 460 | 560 | 690 | 860 | 1060 | 1310 |
| | o | 910 | 910 | 935 | 935 | 1020 | 1065 | 1115 | 1290 | 1385 | 1490 |
| Take-up Station | z | 53 | 53 | 53 | 53 | 53 | 53 | 53 | 64 | 74 | 74 |
| | t | 195 | 195 | 195 | 230 | 230 | 230 | 230 | 325 | 325 | 325 |
| | s | 550 | 550 | 550 | 550 | 550 | 550 | 550 | 550 | 550 | 550 |

Conveying capacity at approx. 75% fill
Dimensional changes are possible

ESSISCR1 new logo 31052018

Research Park Haasrode 1529
Interleuvenlaan 21 • B-3001 Leuven (Belgium)
T +32 (0)16 400 463 • F +32 (0)16 400 252
info@entecom.be • www.entecom.be